



# POPDHH Lunch & Learn

October 2020



Piper  
Program Coordinator, ACE-BC

Elissa D. Robb  
Audiologist, Wavefront Centre



A photograph of a hand sanitizer bottle and a surgical mask on a wooden surface. The sanitizer bottle is in the upper left, and the mask is in the lower left. A semi-transparent text box is overlaid on the center of the image.

## **COVID-19 Conversation:**

Deaf and hard of hearing  
senior high school students

---



# Outline



Academic Communication Equity - BC

- Assessing Barriers & Noticeable Trends
- Case Studies
- Changing & Emerging, a Student Centered Approach
- Communication Tips for Online Learning
- Ideas, Next Steps, Moving Forward
- Discussion and Questions





# Assessing The Barriers & Noticeable Trends



Looking beyond content and technology  
Examining issues through *Case Studies*



# Cassidy

## Pharmacy Student, Second Year

- Congenital severe-to-profound sensorineural hearing loss bilaterally
  - Bimodal amplification (CI + HA) | Roger receivers and Roger Select
    - Clarity is poor and “louder” can sometimes distort speech
  - Relies heavily on captioning services arranged through the institution
  - Completing second year of pharmacy degree
  - Due to COVID-19, all classes have been moved to online (also doing a practicum) and she is struggling with technological aspects
- 

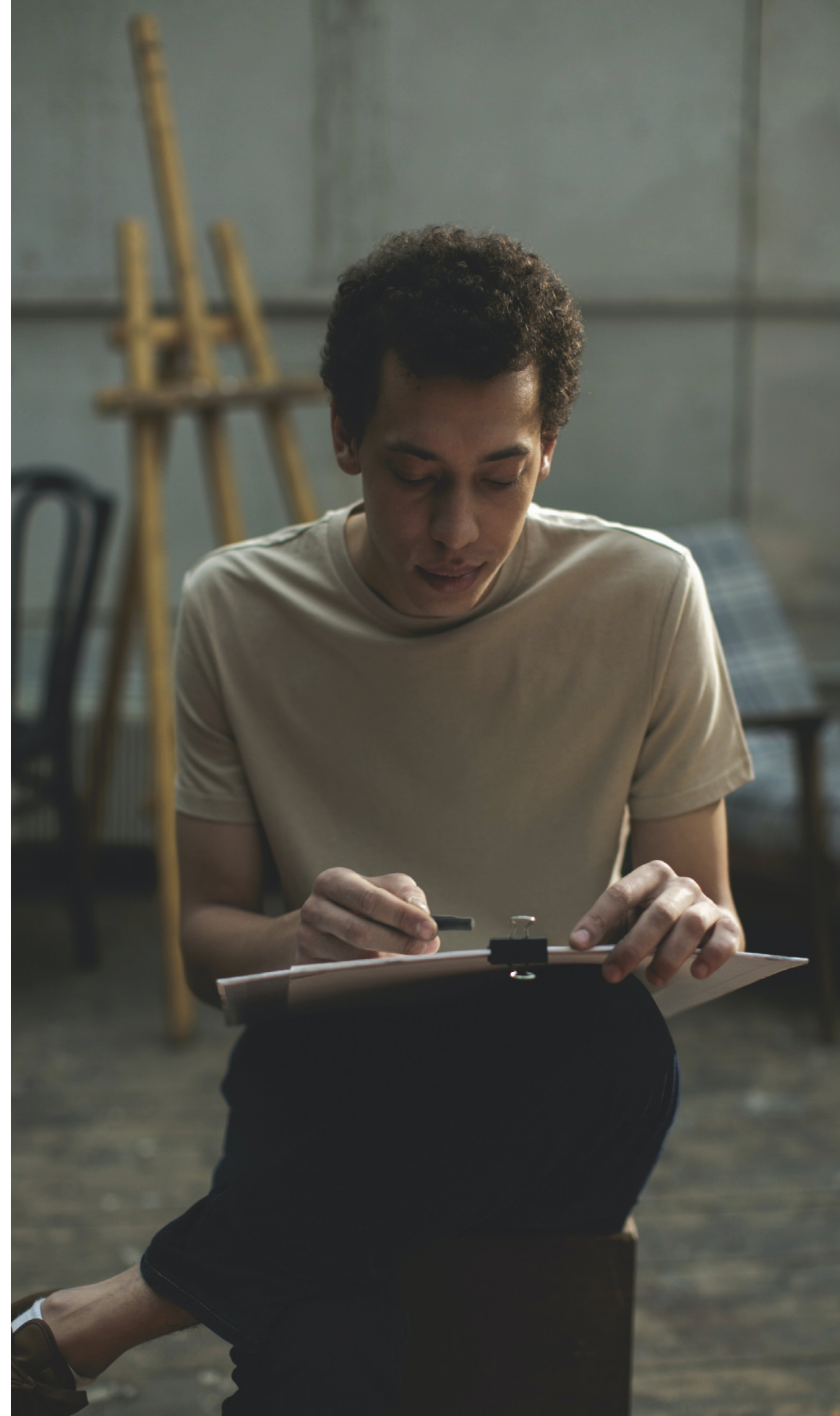




# Kenneth

## General Arts, First Year

- Late onset, bilateral moderately-severe conductive hearing loss
  - Bone-anchored Assistive Devices (BAAD) | Roger receivers and Roger Touch Mic
    - Clarity is not an issue, but is a “power junkie”
  - First year of post-secondary studies and taking a variety of classes
  - Due to COVID-19, classes are online and is struggling with the current format
- 





# Victoria

## Engineering, First Year

- Profound hearing loss bilaterally
  - Communicates using ASL; first language
  - Relies heavily on ASL interpreting services arranged through the institution
  - Due to COVID-19, all classes have been moved to online
- 







# Changing and Emerging

## **A Student-centered approach**

Enabling technology through collaboration and proactive and responsive measures for achieving student success

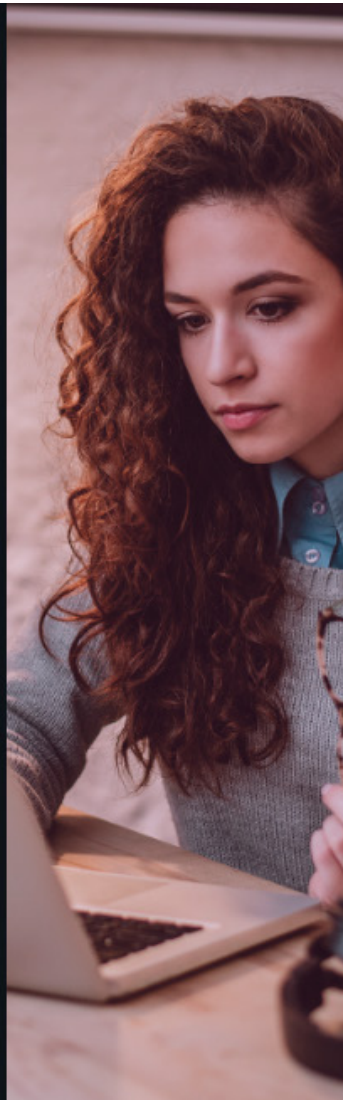


# Communication Tips for Online Learning





# Ideas, next steps, thoughts moving forward:



HOW CAN YOU SUPPORT  
STUDENTS WITH HEARING  
LOSS ENTERING POST-  
SECONDARY IN 2021?

## POST- SECONDARY TRANSITION WEBINAR

For Teachers Supporting  
Deaf + Hard of Hearing  
Students

HOSTED BY:



ACADEMIC  
COMMUNICATION  
EQUITY  
- BRITISH COLUMBIA

NOVEMBER 20, 2020  
12:00 - 2:00 PM



REGISTRATION LINK:

[HTTPS://ACE-BC-TRANSITION-  
WEBINAR.EVENTBRITE.CA](https://ace-bc-transition-webinar.eventbrite.ca)



Academic Communication Equity - BC



# Discussion & Questions







**What do the realities of online learning look like for you?**

---





[elissa.rob主@wavefrontcentre.ca](mailto:elissa.rob主@wavefrontcentre.ca)  
[office@ace-bc.ca](mailto:office@ace-bc.ca)

**Thank you!**

